



MONTHLY MEMBERSHIP PROGRESS REPORT

District 411 A

Results as of: 10/31/2015

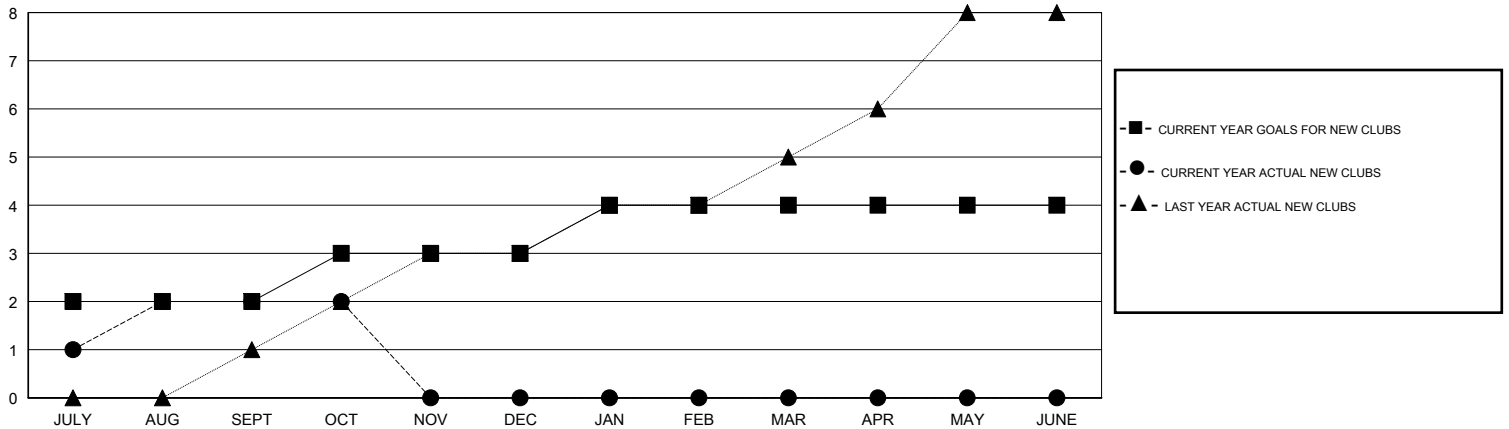
GMT: Amarpreet Sembhi

LOCATION KENYA AFRICA

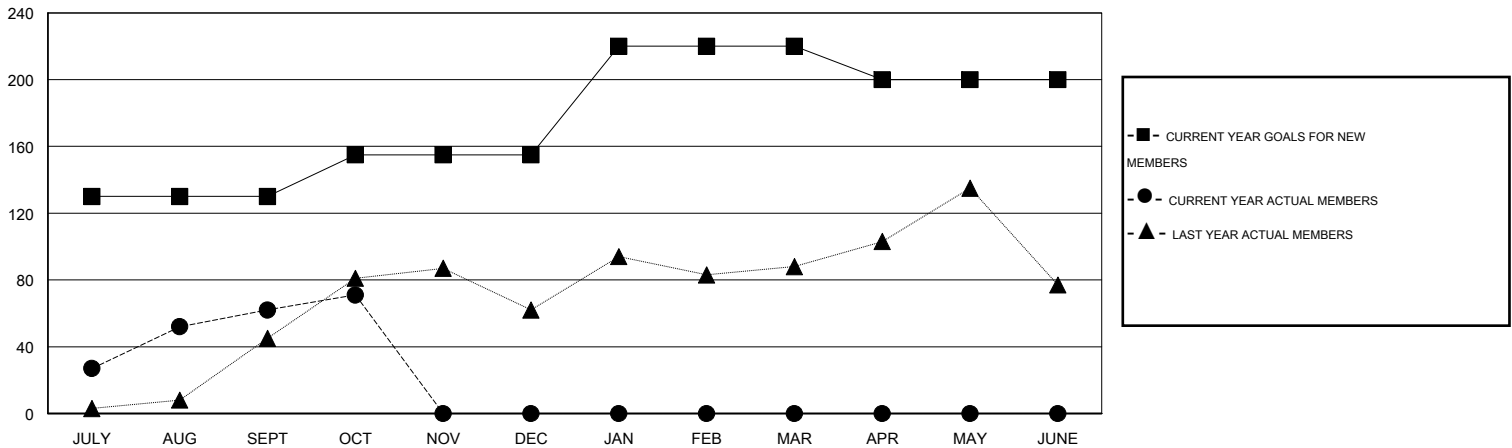
GMT CA 6-Af

Clubs					Members				
RESULTS FOR 2015-2016					RESULTS FOR 2015-2016				
QUARTER	NEW CLUB GOAL	NEW CLUBS	DROPPED CLUBS	NET GAIN/LOSS	QUARTER	NEW MEMBER GOAL	CHARTER AND NEW MEMBERS ADDED	DROPPED MEMBERS	NET GAIN/LOSS
JULY/AUG/SEPT	2	2	1	1	JULY/AUG/SEPT	130	83	21	62
OCT/NOV/DEC	1	0	0	0	OCT/NOV/DEC	25	17	8	9
JAN/FEB/MAR	1	0	0	0	JAN/FEB/MAR	65	0	0	0
APR/MAY/JUNE	0	0	0	0	APR/MAY/JUNE	-20	0	0	0

GOALS AND ACTUAL NEW CLUBS CUMULATIVE



GOALS AND ACTUAL MEMBERS CUMULATIVE



DROPPED CLUBS: 1	21 CLUBS OF 66 ADDED 1 OR MORE NEW MEMBERS	<u>GENDER DISTRIBUTION</u>	
<u>DROPPED MEMBERS</u>		MALE	1,038 (66.67%)
DECEASED	0	FEMALE	519 (33.33%)
CLUB CANCELLED	0	<u>FAMILY UNIT MEMBERS</u> 276	
OTHER	29	<u>HEAD OF HOUSEHOLD</u> 127	
TOTAL	29	<u>NON-HEAD OF HOUSEHOLD</u> 149	

[CLICK HERE FOR HEALTH ASSESSMENT DATA](#)